

Type a



Type b

**INCLUDE IN VALVE, OUT VALVE, SAFETY VALVE, AND SERVICE VALVE**  
**INCLUYE VÁL. ENTRADA, VÁL. SALIDA, VÁL. SEGURIDAD Y VÁL. SERVICIO**

1.- BALL VALVE / VÁLVULA DE BOLA  
2.- LIQUID INDICATOR / VISOR INDICADORHUMEDAD  
3.- FILTER DRIER / FILTRO DESHIDRATADOR

**STATIONS RS / ESTACIONES RS**

| Model<br>Modelo | Code<br>Código | Type | Vol (L) | Valves - Válvulas  |                    | Safety valve<br>Válvula Seguridad | Sight glasses<br>Visores (1") | DIMENSIONS - DIMENSIONES (mm) |      |     |         |     |
|-----------------|----------------|------|---------|--------------------|--------------------|-----------------------------------|-------------------------------|-------------------------------|------|-----|---------|-----|
|                 |                |      |         | IN inch<br>Entrada | OUT inch<br>Salida |                                   |                               | Ø                             | L    | T   | A/A1    | B   |
| RS-30           | 87.001         | a    | 30      | 1 1/8"             | 1 1/8"             | 3/8"                              | 3                             | 273                           | 662  | 220 | 123/180 | 123 |
| RS-45           | 87.002         | a    | 45      | 1 1/8"             | 1 1/8"             | 3/8"                              | 3                             | 273                           | 925  | 220 | 116/180 | 216 |
| RS-60           | 87.003         | a    | 60      | 1 3/8"             | 1 1/8"             | 3/8"                              | 3                             | 323,9                         | 865  | 280 | 130/180 | 215 |
| RS-90           | 87.004         | a    | 90      | 1 5/8"             | 1 1/8"             | 1/2"                              | 3                             | 323,9                         | 1200 | 280 | 130/180 | 250 |
| RS-120          | 87.005         | a    | 120     | 2 1/8"             | 1 3/8"             | 2 x 1/2"                          | 5                             | 323,9                         | 1680 | 280 | 150/180 | 350 |
| RS-150          | 87.006         | a    | 150     | 2 1/8"             | 1 3/8"             | 2 x 1/2"                          | 5                             | 406.4                         | 1356 | 355 | 150/190 | 350 |
| RS-180          | 87.007         | a    | 180     | 2 1/8"             | 1 3/8"             | 2 x 1/2"                          | 5                             | 406,4                         | 1606 | 355 | 165/184 | 350 |
| RS-250          | 87.008         | b    | 225     | 2 1/2"             | 1 3/8" (x2)        | 2 x 1/2"                          | 5                             | 406.4                         | 1766 | 355 | 165/184 | 280 |
| RS-250 (610)    | 87.009         | b    | 250     | 2 1/2"             | 1 3/8" (x2)        | 2 x 1/2"                          | 3                             | 610                           | 1032 | 530 | 205/263 | 305 |
| RS-350          | 87.010         | b    | 350     | 3"                 | 1 3/8" (x2)        | 2 x 1/2"                          | 5                             | 610                           | 1442 | 530 | 205/263 | 344 |
| RS-500          | 87.011         | b    | 500     | 3"                 | 1 3/8" (x2)        | 2 x 1/2"                          | 5                             | 610                           | 1780 | 530 | 237/253 | 389 |

MODELS: RS-250 TO RS-500 AND RS-250-GB TO RS-500-GB:

INCLUDE TWO OUT VALVES WITH TWO SYSTEMS (1+2+3)

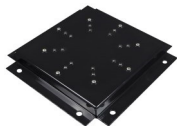
INCLUYEN DOS VÁLVULAS DE SALIDA CON DOS SISTEMAS (COMPUESTO CADA UNO POR LOS ACCESORIOS 1+2+3)

VALID FOR ALL THE REFRIGERANTS HFC: R22, R134a, R404A, R507, .....ETC

VÁLIDO PARA TODOS LOS REFRIGERANTES HFC: R22, R134a, R404A, R507, .....ETC

**OPTIONAL**

SUPPORT VALID FOR ALL THE MODELS SOPORTE VÁLIDO PARA TODOS LOS MODELO



CODE / CÓDIGO: A-007296  
CODE / CÓDIGO: A-007299 (for Ø 610mm)

ELECTRONICAL LEVEL DETECTOR  
DETECTOR DE NIVEL ELECTRÓNICO



CODE / CÓDIGO: A-005044

ALL THE MODELS ARE PAINTED IN BLACK  
TODOS LOS MODELOS SON PINTADOS EN NEGRO



MANUFACTURED ACCORDING TO EUROPEAN DIRECTIVE 97/23/CE  
FABRICADO SEGUN DIRECTIVA EUROPEA 97/23/CE

